



---

**Agenda Item: Discuss and Consider the Approval of the Proposal for Engineering Services for the Mooring of the USS Stewart (Sheryl Rozier, 10 minutes)**

**Background:**

This request is to accept the proposal from Shelmark Engineering LLC to finalize the engineering documents for construction of the moorings for the USS Stewart. The updated designs will incorporate changes brought on by the Galveston Naval Museum (GNM), the State Historic Preservation Officer (SHPO) & FEMA's Environmental Historic Preservation Department (EHP). Staff received approval from FEMA late in FY19-20 for the scope/design modification required by these changes.

Shelmark's scope of work will provide the following phases:

Final Construction Drawings	\$8,500.00
Bid Procurement Services	\$1,750.00
Construction Support Services	\$2,500.00
Reimbursables	\$200.00

The GNM has been consulted regarding the current design and they 'take no exception' to the draft plan, see attached.

**Staff Recommendation:**

Staff recommends accepting the proposal from Shelmark Engineering LLC for \$12,950.00.

**Funding Source (if applicable):**

SW 70-5195 FEMA



**MOORING SYSTEM  
FOR USS STEWART AT SEAWOLF PARK  
GALVESTON, TEXAS  
GALVESTON ISLAND PARK BOARD**

PROJECT:



1201 W. BAYVIEW BLVD. SUITE 100  
GALVESTON, TEXAS 77550  
937.746.4444  
WWW.SHELMARK.COM

ISSUED FOR  
04/19/2021  
REVIEW

INTERIM SUBMITTAL  
DOCUMENT INTENDED  
FOR REVIEW ONLY.  
NOT ISSUED  
FOR CONSTRUCTION.

ENGINEER:  
MARCUS J. MICHA, P.E.  
REGISTRATION NO. 84739

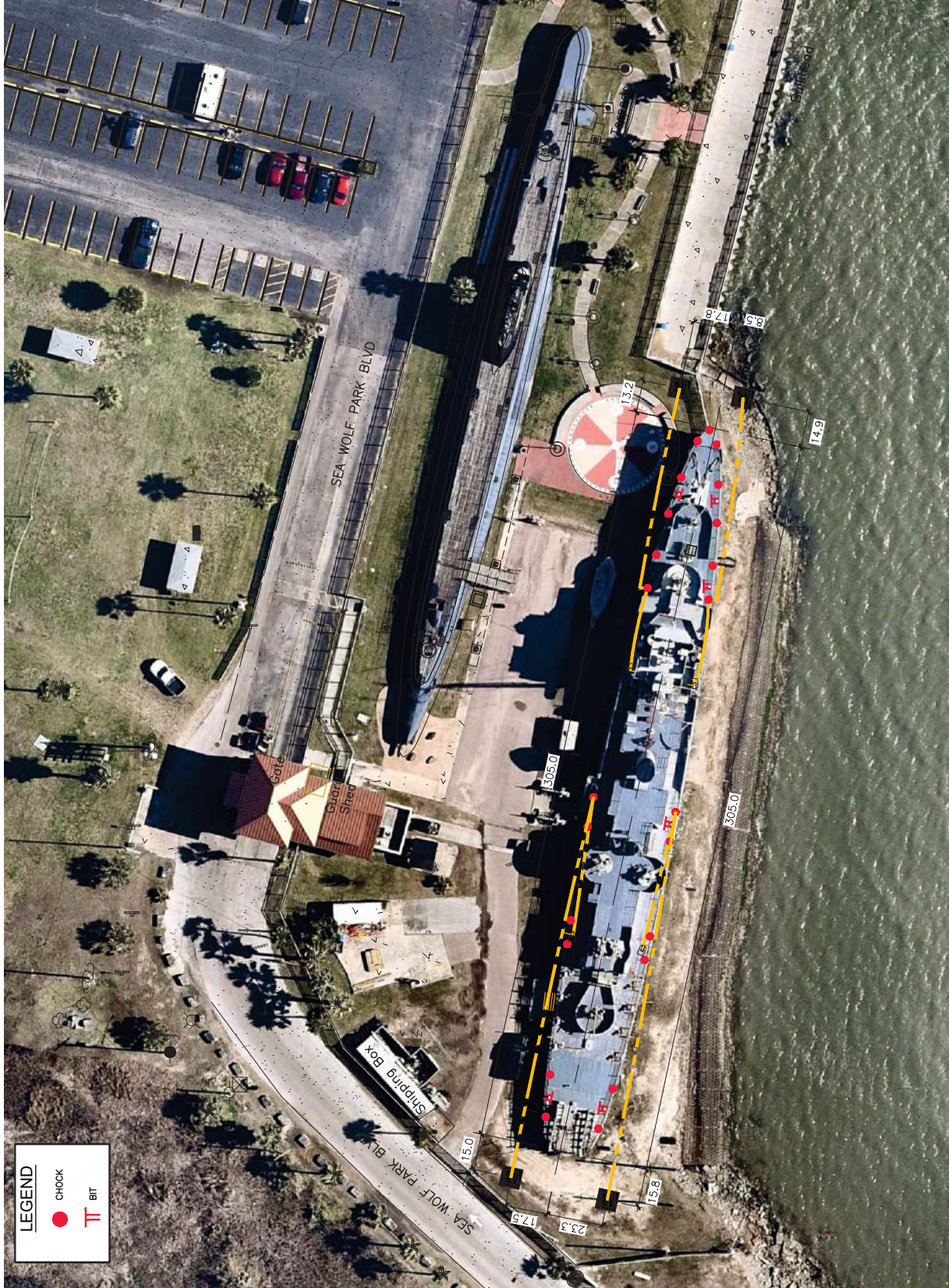
DATE: 04/19/21

DWG NAME:  
2021-REVISED MOORING  
LAYOUT

DWG  
**S1.02**

SCALE: 1" = 40'	BY: CLI
JOB NO: 20-262	REV: A

**DRAFT EXHIBIT**



LEGEND	
●	CHECK
TT	BIT

PROJECT S1.02: 2021-REVISED MOORING LAYOUT. THIS DOCUMENT IS THE PROPERTY OF SHELMARK ENGINEERING, LLC. IT IS TO BE USED ONLY FOR THE PROJECT AND SITE SPECIFICALLY IDENTIFIED HEREIN. ANY REPRODUCTION OR TRANSMISSION OF THIS DOCUMENT WITHOUT THE WRITTEN CONSENT OF SHELMARK ENGINEERING, LLC IS STRICTLY PROHIBITED.